



# The Octopus (age 3-12 years)

Ref. KZM2000-1

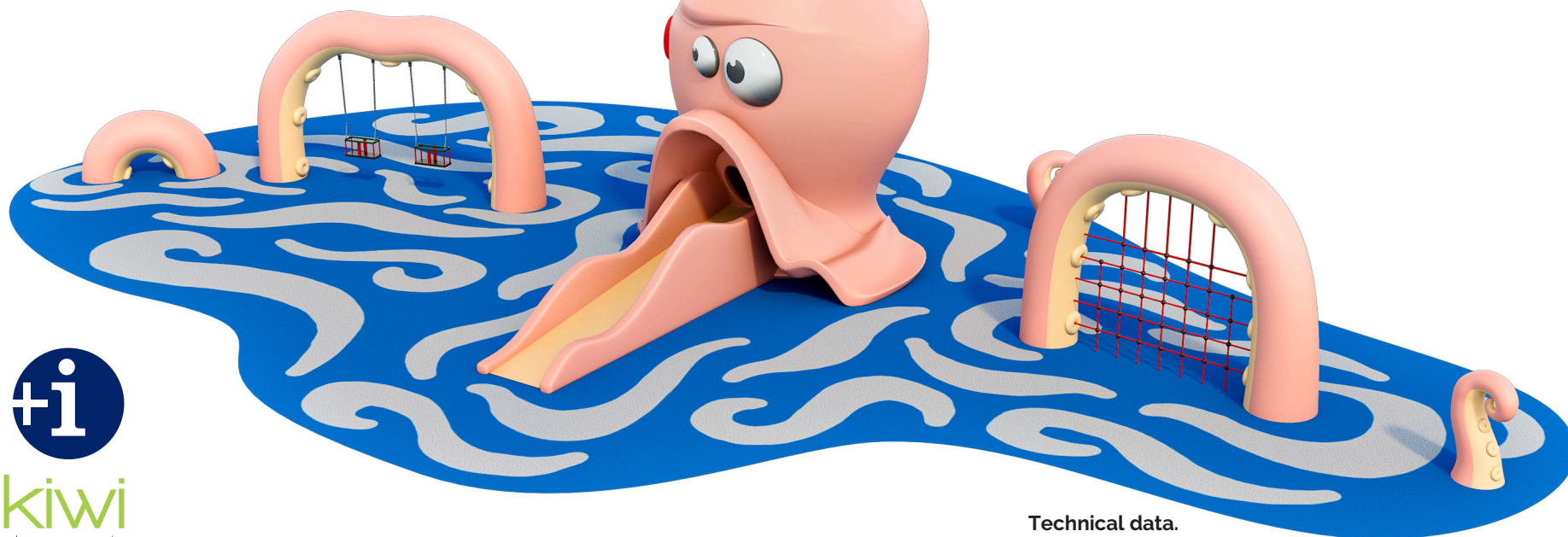
Last check, nov. 2019

Page 1/4

EN-1176-1: 1/7



SERIE  
**ANiMALS**  
SERIES  
*special projects*



C/ Foia, 13  
P.I. Alquería  
de Moret  
46210 Picanya  
(Valencia)



+34 963 313 677



kiwi@kiwipw.com



kiwiparcels.com

The company reserves  
the right to perform  
any modification or  
change in their products.

## Technical information

**Animal:** Build in polyester painted by mass, with gel-coat of predominant colour and anti-graffiti treatment.

**Swing chains:** On galvanized steel.

**Swing seats:** Made in injected rubber with aluminium core.

**Climbing holds:** Made in latest generation polyurethane with rugged finish.

**Slide:** single piece of polyethylene.

**Platforms:** phenolic boards, wisa-multifloor, 18 mm. of thickness.

**Screws:** On galvanized steel.

**Bindings:** In polyester with fiberglass reinforcement. to screw on foundation.

## Technical data.

**Assembly:** 2 pers. 2 hours.

**Total high:** 3,50 m.

**Free fall height:** 1,30 m.

**Safety area:** according to project  
and installed games

**Biggest element dimensions:** 2,95 m.

**Spare parts disponibility:** 3 years.

## Option 1 includes:

- Complete head with slide of 130 and climbing net x1
- Large arch single climbing net (no swing bar added) x1
- Large bow double swing or nest swing x1
- Mini arch at ground level x2
- Vertical tentacle end x2

MULTIGAMES THEMED AREAS



# The Octopus (age 3-12 years)

Ref. KZM2000-1

Last check, nov. 2019

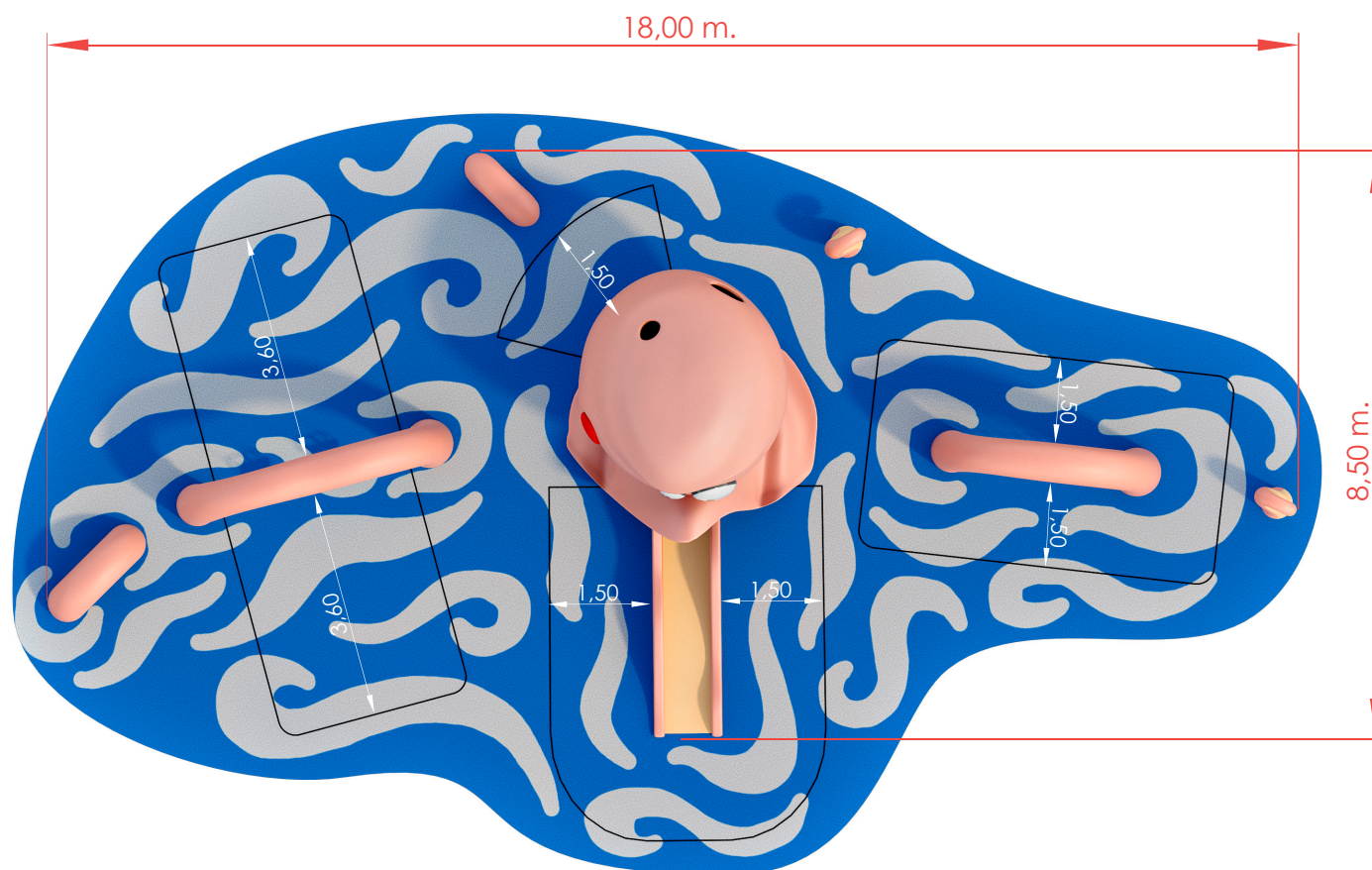
Page 2/4

EN-1176-1: 1/7



**SERIE**  
**ANIMALS**  
**SERIES**  
*special projects*

Total safety area: Varies according to project. Maximum dimensions (m.)



**MULTIGAMES THEMED AREAS**



C/ Foia, 13  
P.I. Alquería  
de Moret  
46210 Picanya  
(Valencia)



+34 963 313 677



kiwi@kiwipw.com



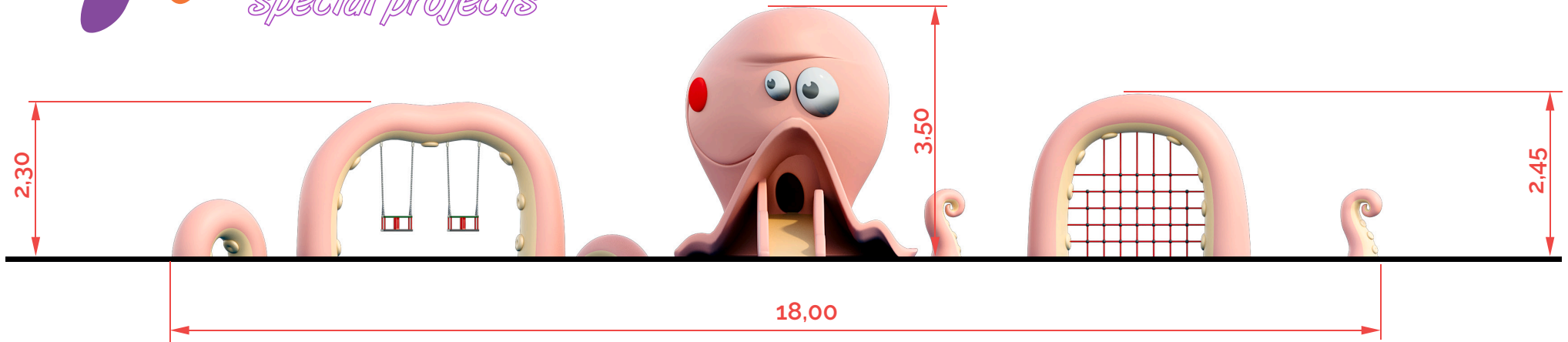
kiwiplaygrounds.com

The company reserves  
the right to perform  
any modification or  
change in their products.



SERIE  
**ANiMALS**  
SERIES  
*special projects*

Maximum dimensions (m.)



C/ Foia, 13  
P.I. Alquería  
de Moret  
46210 Picanya  
(Valencia)



+34 963 313 677

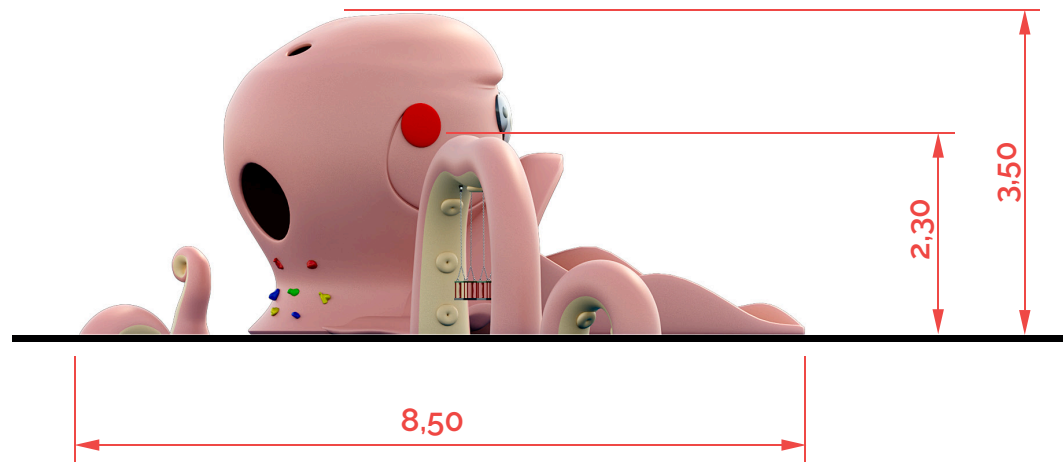


kiwi@kiwipw.com



kiwiplaygrounds.com

The company reserves  
the right to perform  
any modification or  
change in their products.



MULTIGAMES THEMED AREAS





# The Octopus (age 3-12 years)

Ref. KZM2000-1

Last check, nov. 2019

Page 4/4

EN-1176-1: 1/7



**SERIE**  
**ANIMALS**  
**SERIES**  
*special projects*



## Maintenance.

-Check: All fixing points. Screws and bolts must be periodically checked, then tightened and adjusted if necessary. The checking date must be annotated in order to establish a control.

## Inspections.

-Routine Inspection: A visual and functional inspection must be carried out every 3 months in order to check that the module has suffered no harm due to vandalism or mishandling.

-Yearly Inspection: A full inspection of the entire installation must be done to check that it keeps all norm standards and has suffered no alterations.

## Installation.

Anchored to the floor with expansion bolts. Finished with compacted material coating either continuous wet-pour rubber surfacing or rubber tiles.



C/ Foia, 13  
P.I. Alquería  
de Moret  
46210 Picanya  
(Valencia)



+34 963 313 677



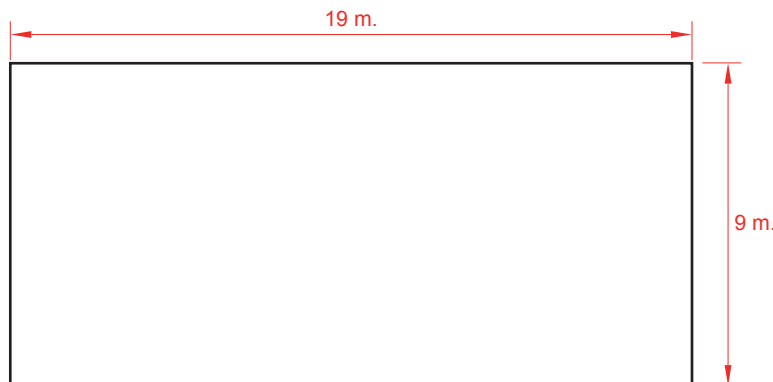
kiwi@kiwipw.com



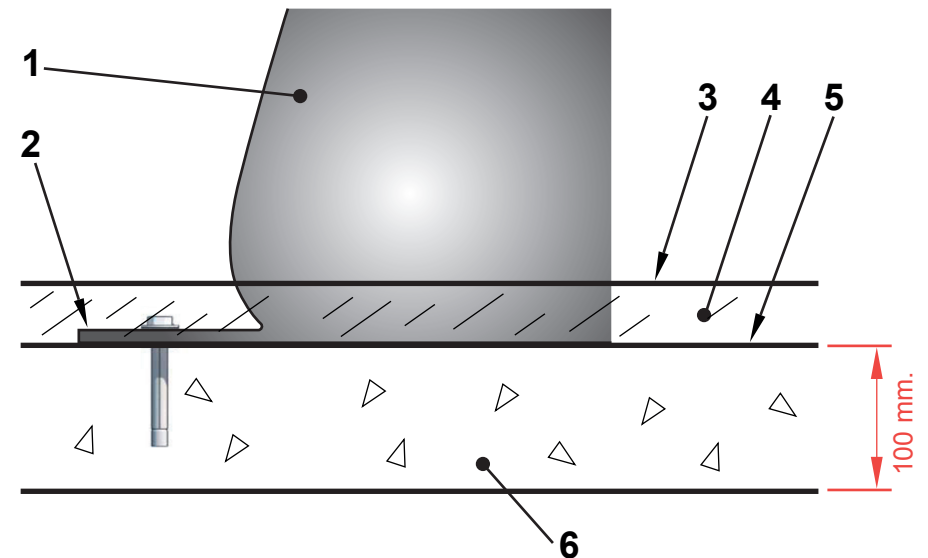
kiwiplaygrounds.com

The company reserves  
the right to perform  
any modification or  
change in their products.

## Foundation dimensions.



## Anchoring detail



1 Animal.  
2 Tab.  
3 Playing surface.

4 Rubber.  
5 Foundation's upper layer.  
6 Foundation.

MULTIGAMES THEMED AREAS