



Climbing Wall - vocals (age 3-6 years)

Ref. KP1038

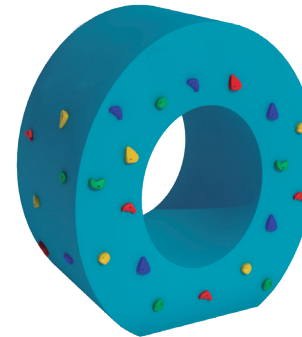
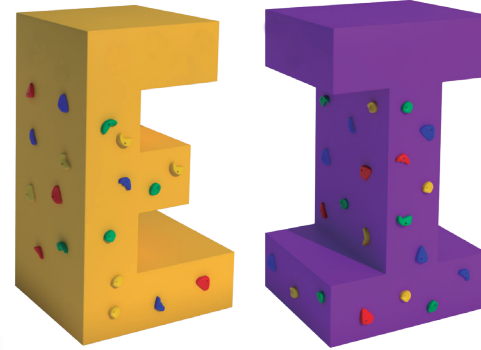
Last check dec./ 2018

Pag. 1/3

EN-1176-1: 1/7



SERIE
ANiMALS
SERIES



Technical information.

Structure: Made of water repellent wood board.

Finish: exterior lined in fiberglass sheets with polyphonic coating and mass painted with color to choose.

Climbing holds: Made in latest generation polyurethane with rugged finish.

Screws: of zinc plates steel.

Bindings: High resistance angle brackets made in zinc plates steel.

Technical data.

Assembly: 2 pers. 2 hours.

Total high: 2 m.

Maximum height fall: 2 m.

Safety area: 26,3 m²

Biggest piece dimension: 2 m.

Spare pieces availability: 3 years.

You can compose any word, combining references KP1038 and KP1039, and with or without climbing holds.



C/ Foia, 13
P.I. Alquería
de Moret
46210 Picanya
(Valencia)



+34 963 313 677



kiwi@kiwipw.com



www.kiwipw.com

The company reserves
the right to perform
any modification or
change in their products.

CLIMBING WALLS



Climbing Wall - vocals (age 3-6 years)

Ref. KP1038

Last check dec./ 2018

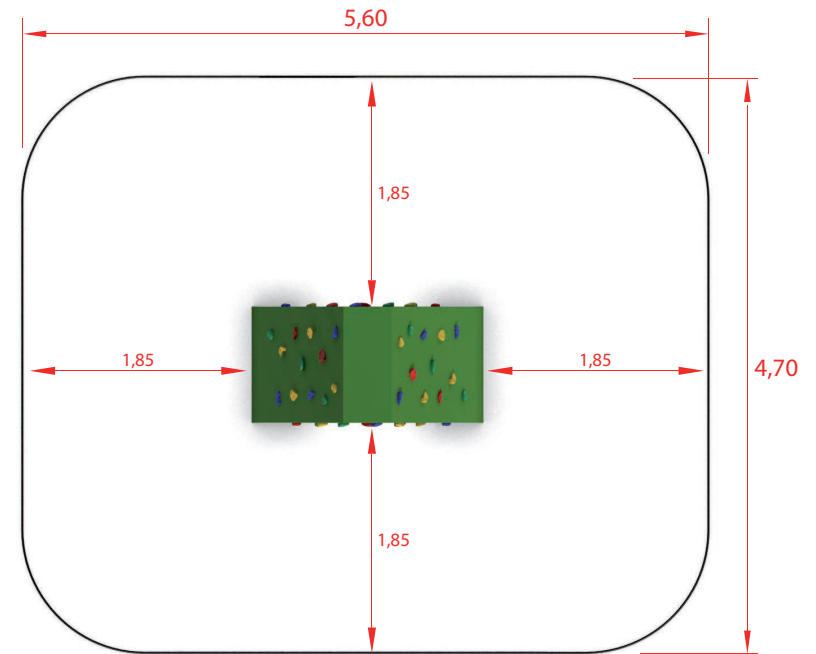
Pag. 2/3

EN-1176-1: 1/7

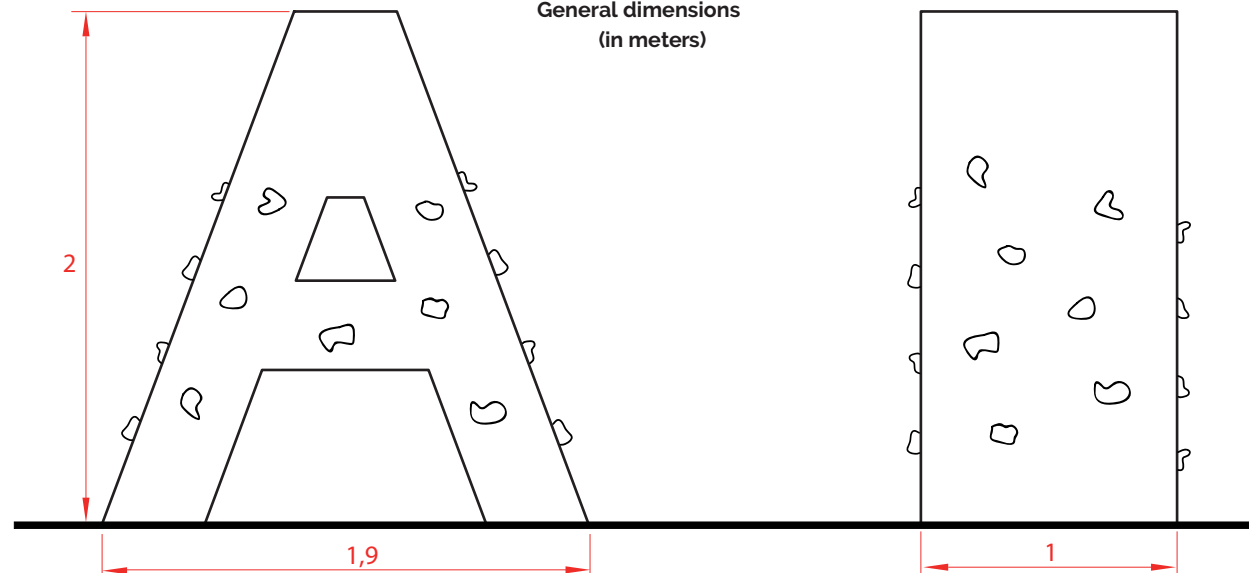


SERIE
ANIMALS
SERIES

Safety area: 26,3 m²
(It varies depending
on the letter.)



General dimensions
(in meters)



C/ Foia, 13
P.I. Alquería
de Moret
46210 Picanya
(Valencia)



+34 963 313 677



kiwi@kiwipw.com



www.kiwipw.com

The company reserves
the right to perform
any modification or
change in their products.

CLIMBING WALLS



Climbing Wall - vocals (age 3-6 years)

Ref. KP1038

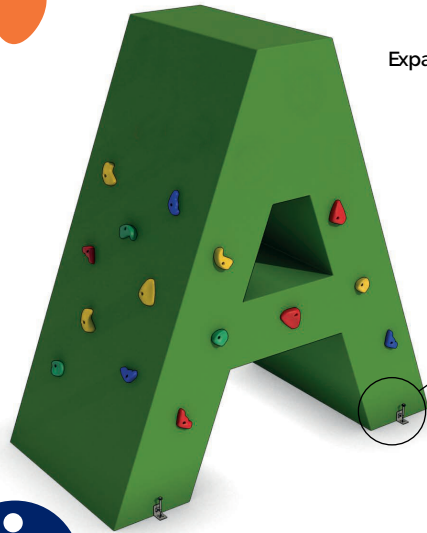
Last check dec./ 2018

Pag. 3/3

EN-1176-1: 1/7

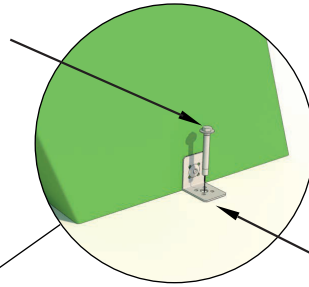


SERIE
ANiMALS
SERIES



Expansión bolt

Anchoring detail.



Square bracket

Installation.

Anchored to the floor with expansion bolts. Finished with compacted material coating either continuous wet-pour rubber surfacing or rubber tiles.

Maintenance.

-Check: All fixing points. Screws and bolts must be periodically checked, then tightened and adjusted if necessary. The checking date must be annotated in order to establish a control.

Inspections.

-Routine Inspection: A visual and functional inspection must be carried out every 3 months in order to check that the module has suffered no harm due to vandalism or mishandling.

-Yearly Inspection: A full inspection of the entire installation must be done to check that it keeps all norm standards and has suffered no alterations.



C/ Foia, 13
P.I. Alquería
de Moret
46210 Picanya
(Valencia)



+34 963 313 677



kiwi@kiwipw.com



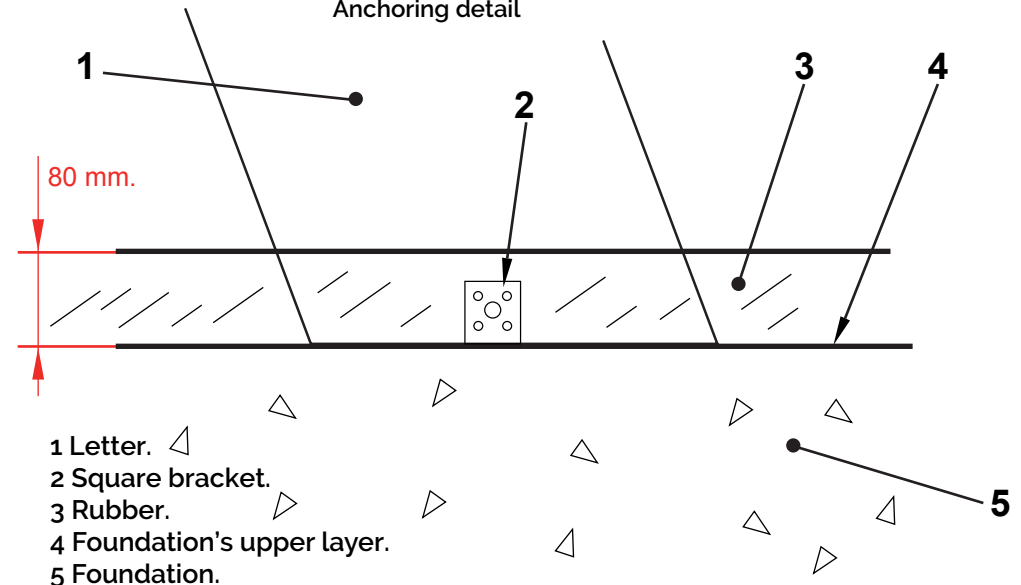
www.kiwipw.com

The company reserves
the right to perform
any modification or
change in their products.

Dimensions for the concrete slab.
It varies depending on the letter.



Anchoring detail



CLIMBING WALLS