

Example combination



# Horse (age 6-12 years)

Ref. KP4002

Last check 07/03/2016

Pag. 2/3

EN-1176-1:2009



## Technical information.

**Animal:** Build in poliester painted by mass, with gel-coat of predominant color and anti-graffiti treatment.

**Structure:** Internal build in galvanized steel pipe.

**Surface:** Walk zone finished in high resistance EPDM.

**Anchoring:** Galvanized steel for mounting on concrete foundation.

## Technical data.

**Assembly:** 2 pers. 2 hours.

**Weight:** 300 Kg.

**Total hight:** 2,4 m.

**Free fall height:** 1,50 m.

**Safety area:** 40,91 m<sup>2</sup>. (example)

**Biggest piece dimension:** 3 m.

**Spare pieces availability:** 3 years.

## For further information.

Contact us.

KIWI PLAYGROUNDS & WOODS.

C/ Foia, 13 P.I. Alqueria de Moret

46210 Picanya (Valencia)

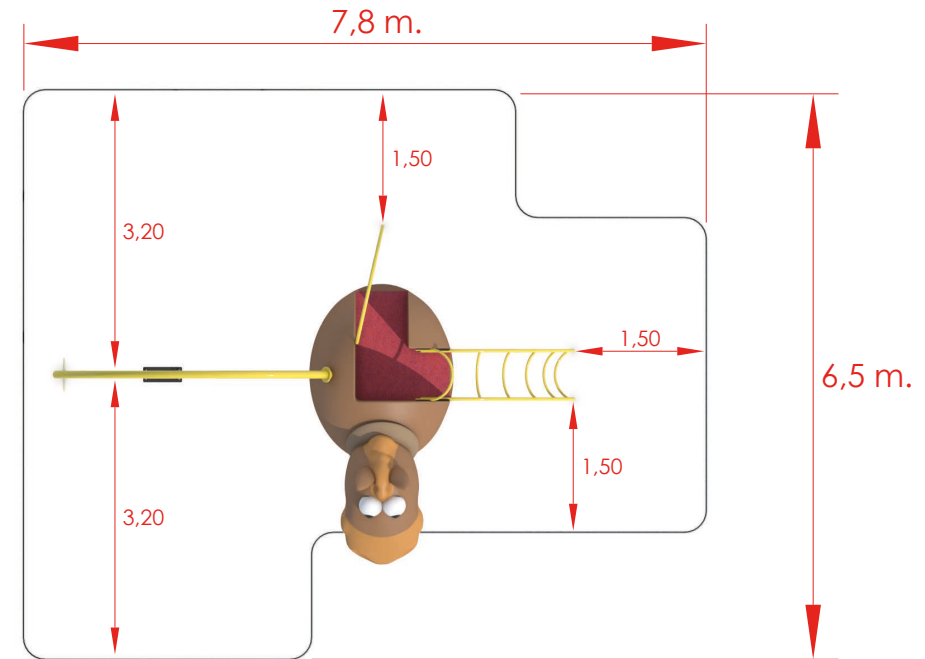
Tel. +34 963 313 677

E-mail: [kiwi@kiwipw.com](mailto:kiwi@kiwipw.com)

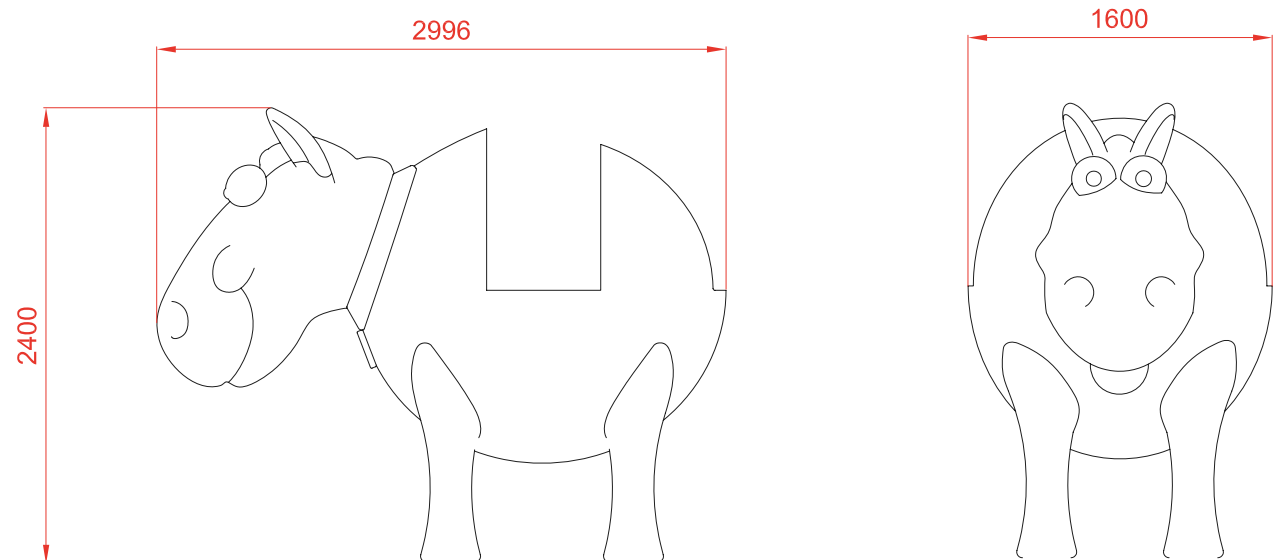
Web: [www.kiwipw.com](http://www.kiwipw.com)

The company reserves its right to apply any modifications or changes to their products.

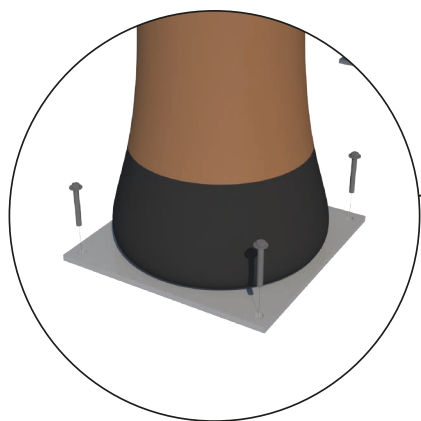
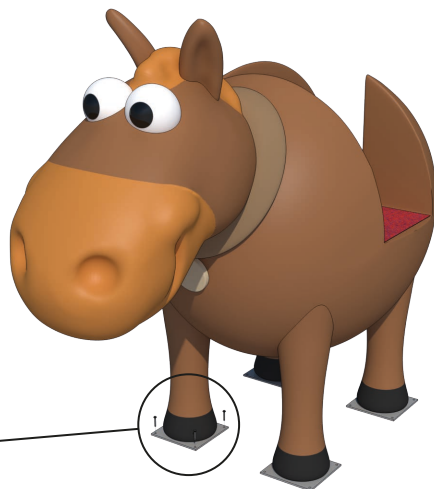
Safety area 40,91 m<sup>2</sup>  
(with example elements)



General dimensions  
(in millimeters)

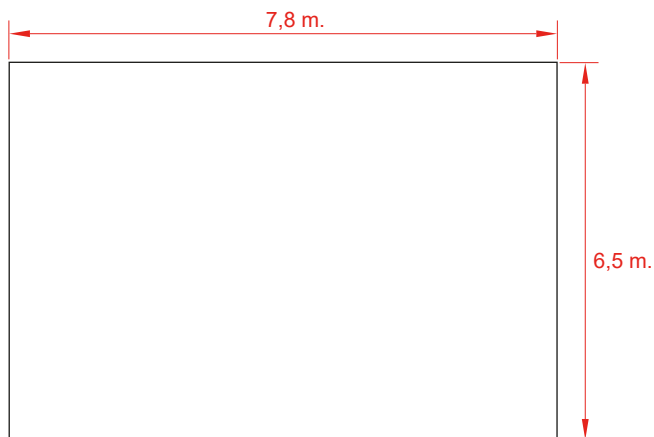


ANIMALS



Anchoring detail

Dimensions for the concrete slab.



### Installation.

Anchored to the floor with expansion bolts. Elements like the slide must be anchored with threaded rod and epoxi. Finished with compacted material coating either continuous wet-pour rubber surfacing or rubber tiles.

### Maintenance.

-Check: All fixing points, screws and bolts must be periodically checked and they will be tightened and adjusted again if necessary. The checking date must be annotated in order to establish a control.

### Inspections.

-Routine Inspection: A visual and functional inspection must be carried out every 3 months in order to check that the module has not suffered any harm due to vandalism or mishandling.

-Yearly Inspection: A full inspection of the installation as a whole must be done in order to check that it keeps all norm standards and that it has not suffered any alterations.

Anchoring detail

